

Reconstruction of the Lincoln Avenue Bridge over the NEC Rail Line, an Inactive Rail Yard, and the Assunpink Creek City of Trenton, Mercer County

Public Information Center #1

December 7 – 18, 2020



Engineering | Design | Planning | Construction Management



Presentation Overview

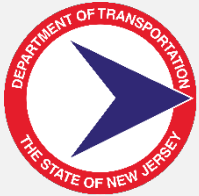
- Project Team
- Project Delivery Process
- Project Location / Limits
- Purpose and Need
- Existing Conditions
- Approved Project Plan
- Construction Staging
- Detour
- Project Schedule and Construction Cost Estimate
- Feedback



Project Team



Aaron T. Watson – Deputy Administrator/Director DOT&I
George A. Fallat, PE – County Engineer
Basit A. Muzaffar, PE (Sunny) – Project Manager, Assistant County Engineer



Kyle Skala – Bureau of Local Aid and Economic Development



John Coscia, Jr. – Manager, Office of Project Implementation



Bernard Boerchers, PE, PTOE – Project Manager
William Farrow, PE – Deputy Project Manager



Project Delivery Process

Local Concept Development	Local Preliminary Engineering	Final Design / Right of Way Acquisition	Construction
Purpose and Need Statement	Approved Design Exception Report	Construction Contract Document and PS&E Package	Completed Construction
Data Collection and Environmental Screening Report	Cost Estimates (Final Design ROW and Construction)	Environmental Reevaluations	As-Built
Selection of Preliminary Preferred Alternative	Approved Environmental Document	Environmental Permits	Update and Finalize Design Communications Report
NEPA Classification	Approved Project Plan	Acquisition of ROW	Close-Out Documentation
Concept Development Report	Preliminary Engineering Report	Update Design Communications Report	
Create Design Communications Report	Update Design Communications Report		



Project Location

Project Site

STR. NO. 1100-055

MARTIN HOUSE

CHAMBERS STREET

E. STATE STREET

NORTHEAST CORRIDOR (NEC)

NJDOT PROJECT ORPHAN BRIDGE

MONMOUTH STREET

NJDOT PROJECT ORPHAN BRIDGE

NJDOT PROJECT ORPHAN BRIDGE

CHESTNUT AVE

NJDOT
Trenton Amtrak
Bridges Project

Mercer County

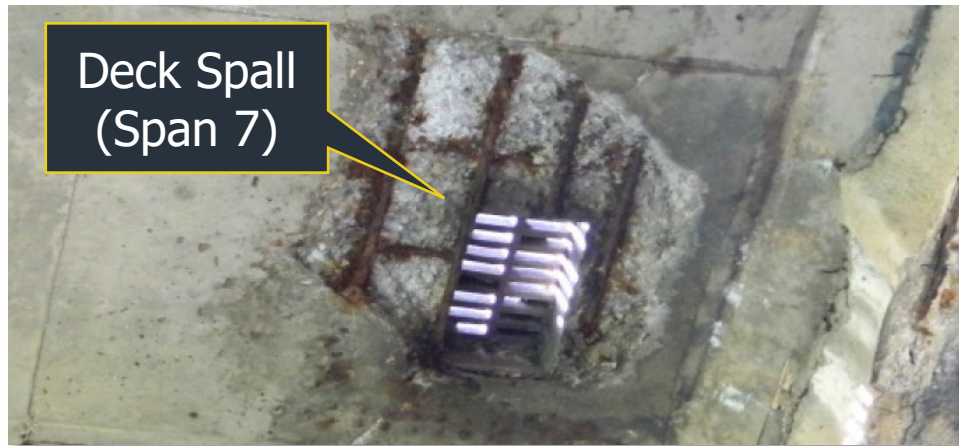
Lincoln Avenue
Bridge Replacement
Preliminary Engineering

Project Location Map



Purpose and Need

- Purpose is to replace Structure No. 1100-055 (County No. 140.9)
- Rated **3-Serious** due to condition of the superstructure
 - Deck rating: 4-Poor
 - Superstructure rating: 3-Serious
 - Substructure rating: 5-Fair
- Sufficiency Rating of **46.2**



Existing Conditions (Bridge)

Structural Information and Deficiencies

- Carries Lincoln Avenue over Amtrak NEC and Assunpink Creek
- Built in 1931
- Reconstructed in 1965
- Comprised of 8 simple spans
- Steel through-girders (fracture critical)
- Steel floorbeams and concrete deck
- Severely corroded steel
- Large areas spalled / delaminated concrete
- Substandard vertical underclearance



Existing Conditions (Roadway)



Roadway Information and Deficiencies

- 2 lane, urban minor arterial
- Not posted (25 mph)
- 18-foot wide lanes, no shoulders (CSDE)
- 6-foot wide sidewalk on either side
- Roadway/pedestrian lighting
- Broken back horizontal curves
- Substandard vertical stopping sight distance
- Substandard cross slope
- Clear zone (14-16') with obstructions



Existing Conditions (Rail)











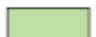
Railroad Operations

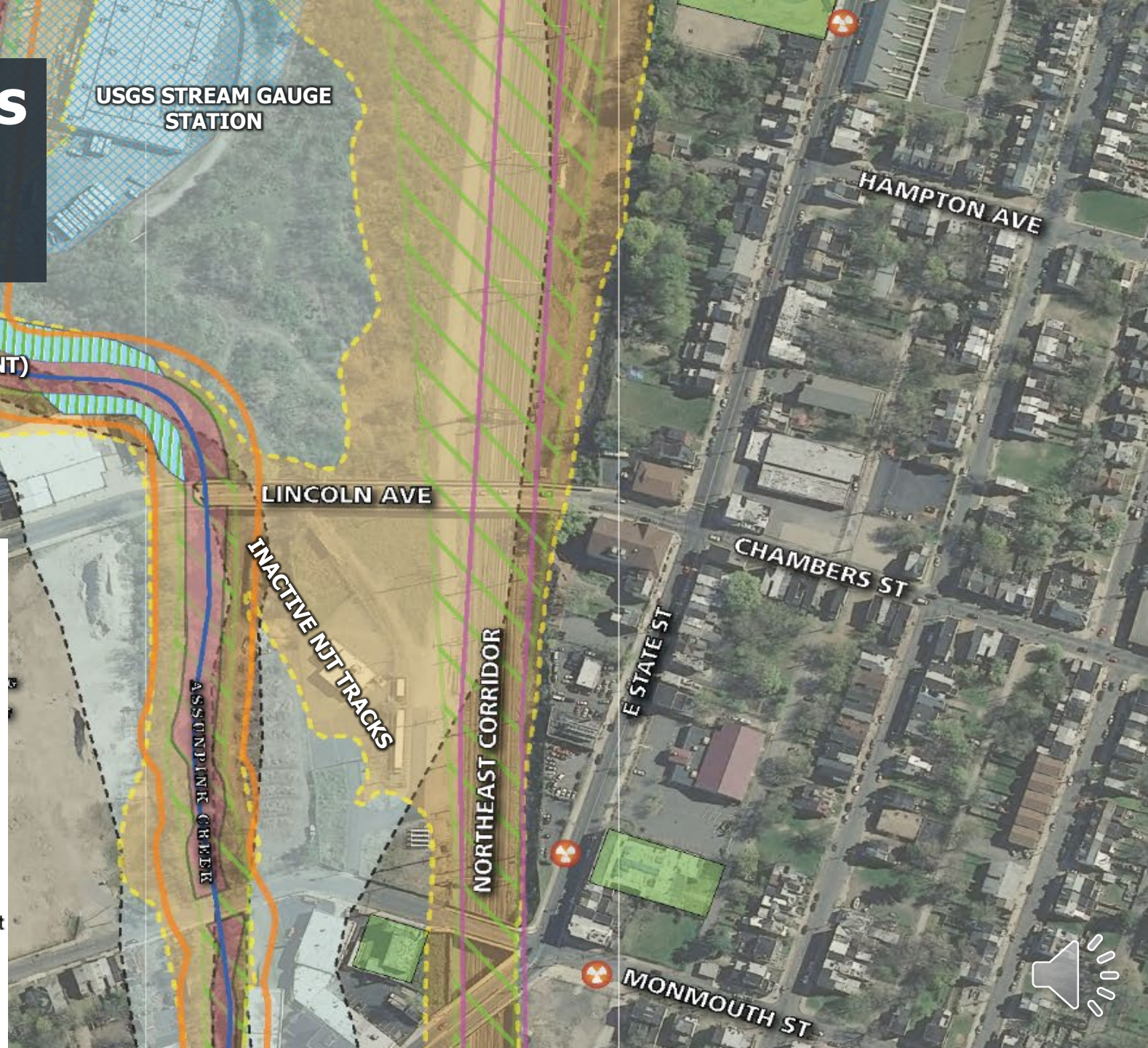
- Amtrak Northeast Corridor (NEC)
 - Amtrak
 - NJ Transit
 - Freight
- 5 mainline and 1 siding electrified tracks
- Overhead catenary lines and feeder cables
- Inactive NJ Transit tracks and old platform



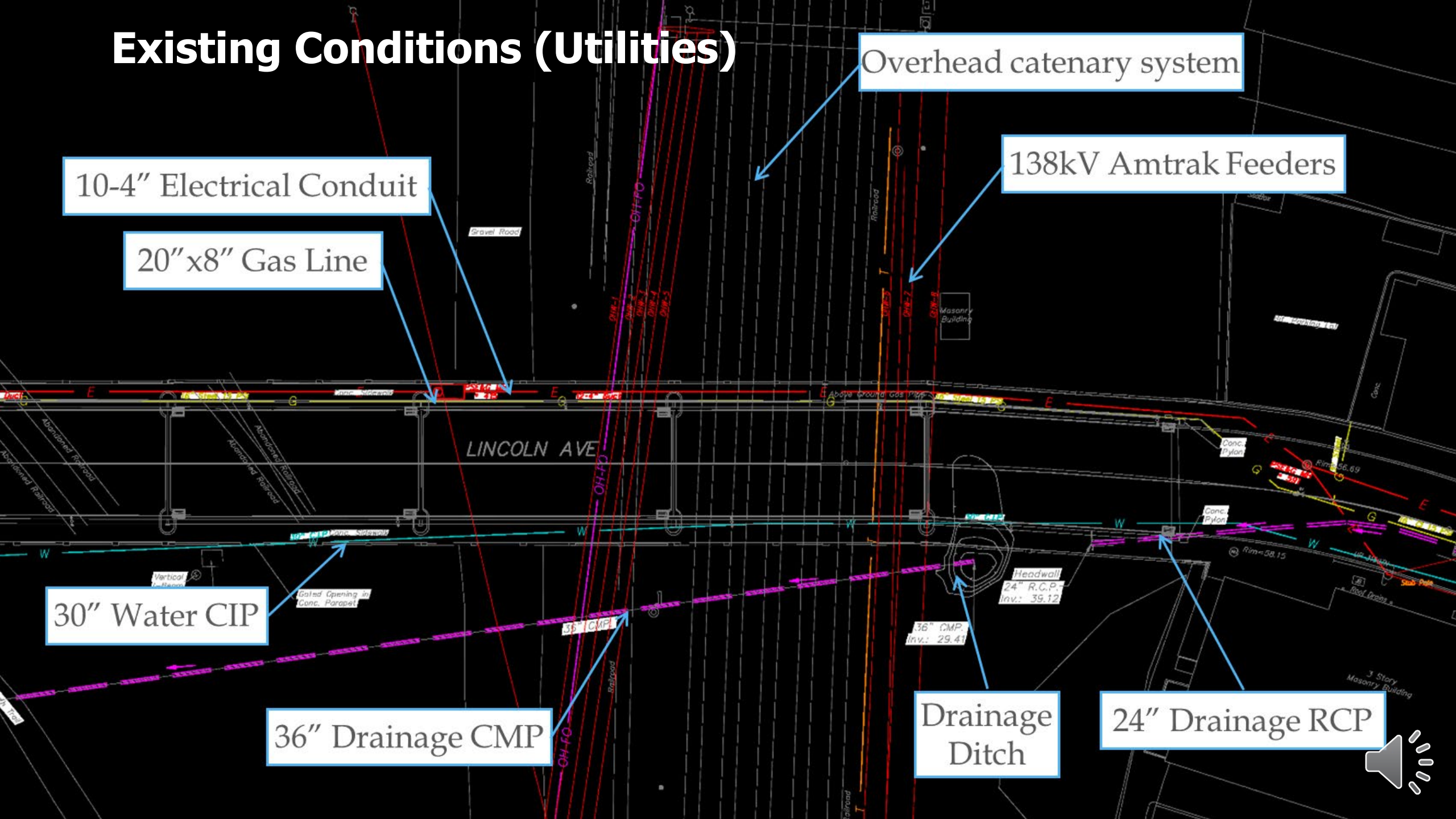
Existing Conditions (Environmental Constraints)

LEGEND

-  NJDEP Known Contaminated Site List
-  Special Concern Habitat (Great Blue Heron Foraging)
-  Brownfield Development Area (NJDEP 2013)
-  Stream (NJDEP SWQS FW2-NT)
-  Wetlands 2007 (NJDEP LU/LC)
-  FEMA/NJDEP Flood Hazard Area
-  Riparian Zone (50 Ft)
-  Floodway Limit
-  Pennsylvania Railroad New York to Philadelphia Historic District
-  Historic Fill Location
-  Historic Property (Eligible Status)



Existing Conditions (Utilities)



10-4" Electrical Conduit

20" x 8" Gas Line

Overhead catenary system

138kV Amtrak Feeders

30" Water CIP

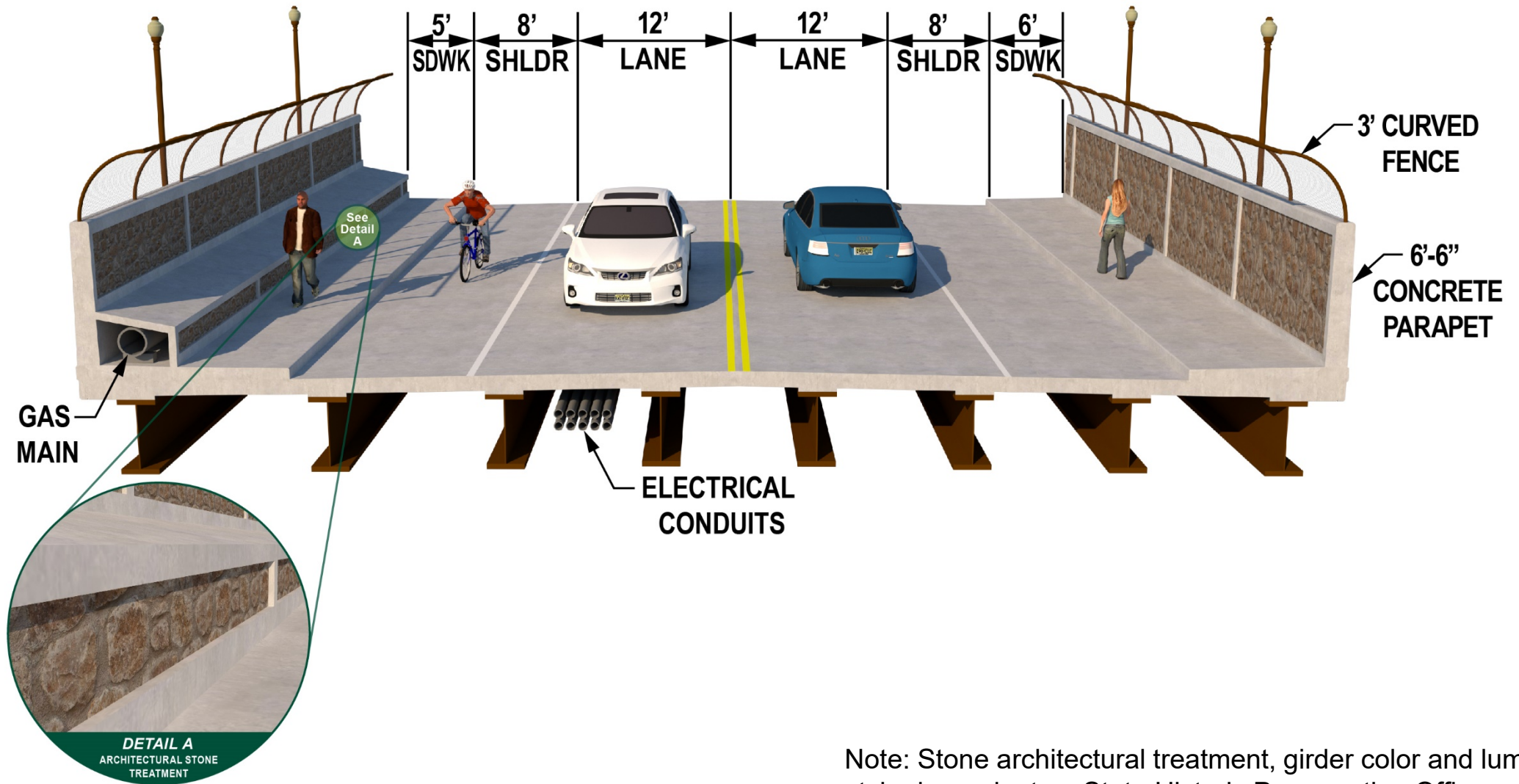
36" Drainage CMP

Drainage Ditch

24" Drainage RCP

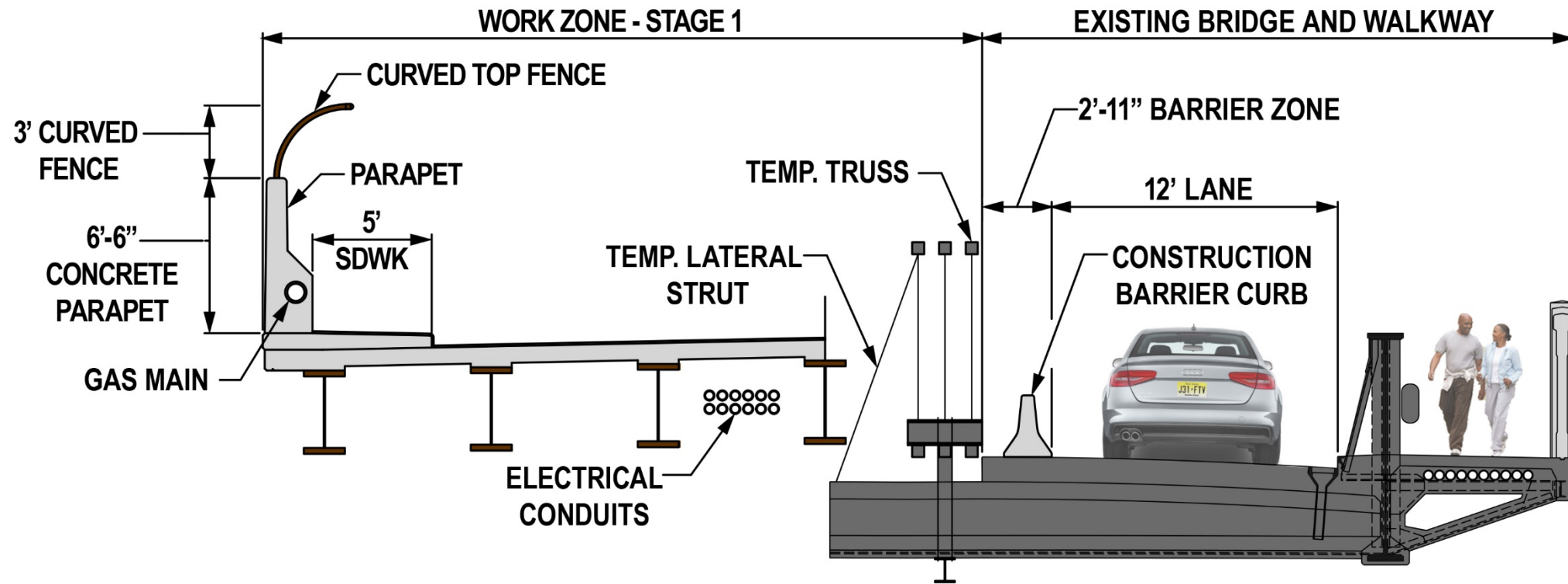


Approved Project Plan



Note: Stone architectural treatment, girder color and luminaire style dependent on State Historic Preservation Office approval

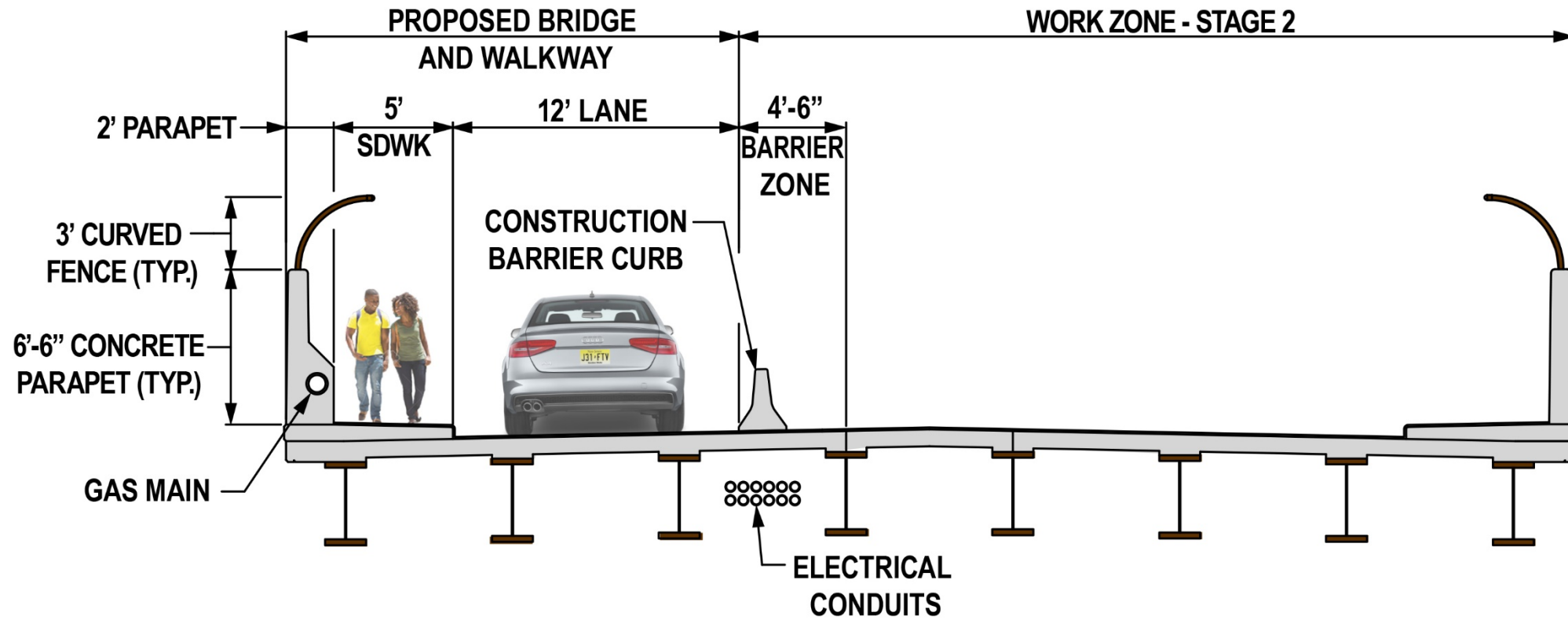
Construction Staging



STAGE 1 - CONSTRUCTION



Construction Staging





STAGE 2 - CONSTRUCTION



Approved Project Plan (Detour)



LEGEND

-  Detour EB Traffic
-  Maintain WB Traffic One-Way



Project Schedule and Construction Cost Estimate



Estimated Construction Cost:
\$38 Million Dollars (in 2020 dollars)
Estimated Right of Way Costs is \$1 Million Dollars



Public Feedback

**Submit Questions, Comments and Suggestions
at the link below:**

For more information contact:

Basit Muzaffar, PE, Assistant County Engineer
DOT&I Mercer County, Division of Engineering

640 South Broad Street

Trenton, NJ 08650-0068

Email: bmuzaffar@mercercounty.org

